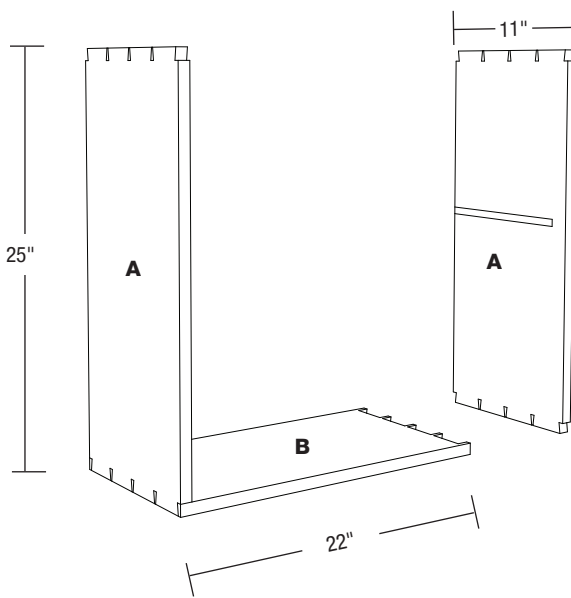
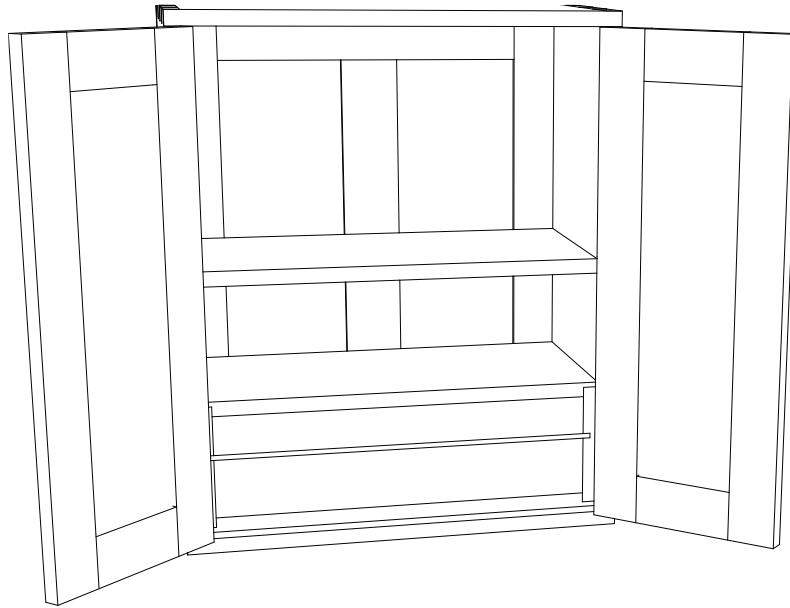
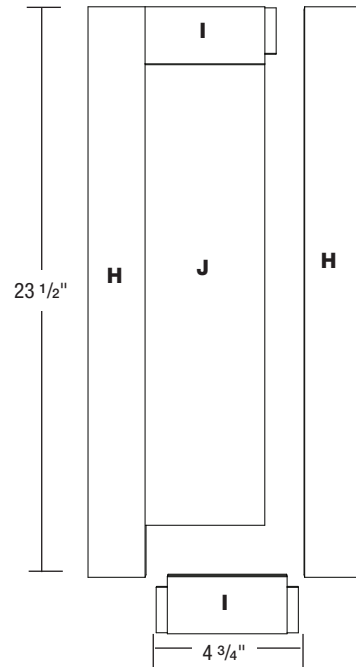


# Adventure Chest

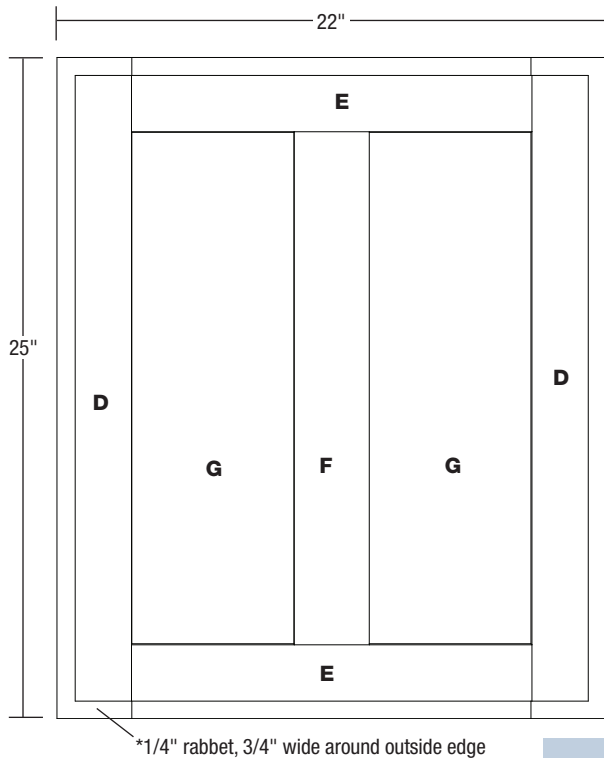
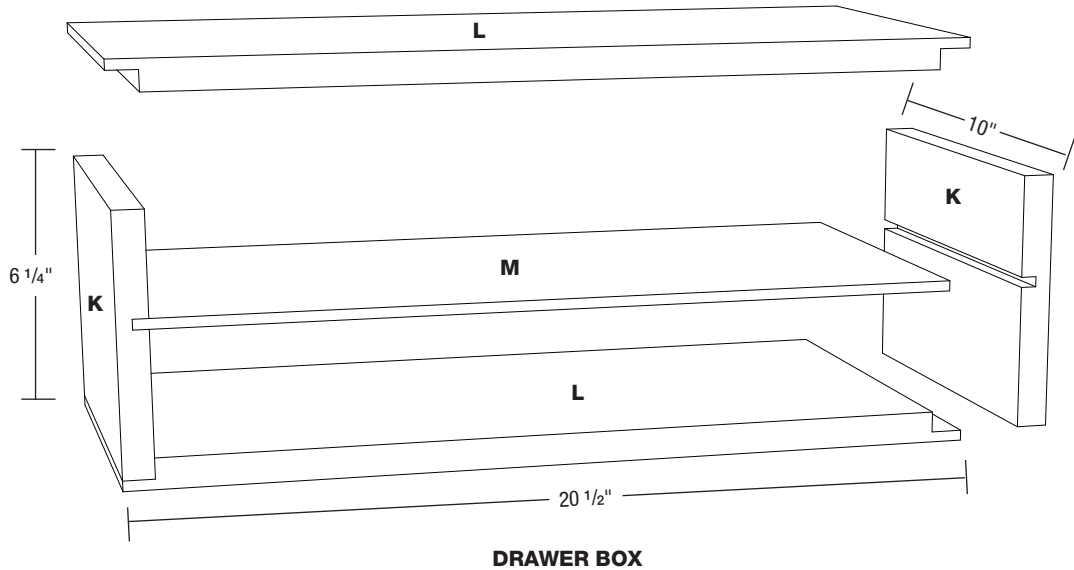


**CARCASS**



**DOOR**

# Adventure Chest



## Adventure Chest

No.	Item	Dimensions (in.)		
		T	W	L
2	A Sides	3/4	11	25
2	B Top/Bottom	3/4	11	22
1	C Shelf	3/4	10	21
2	D Back Rails	3/4	3	25
2	E Back Stiles	3/4	3	15
1	F Back Middle Stile	3/4	3	20
2	G Back Panel	1/4	7	20
4	H Door Rails	3/4	3	23 1/2
4	I Door Stiles	3/4	3	4 3/4
2	J Door Panels	1/4	5 1/4	18
2	K Drawer Box Sides	3/4	10	6 1/4
2	L Drawer Box Top/Bottom	3/4	10	20 1/2
1	M Drawer Box Divider	1/4	10	19 3/4
2	N Small Drawer Sides	1/2	2	8
2	O Small Drawer Front/Back	1/2	2	20 1/2
2	P Large Drawer Sides	1/2	3	8
2	Q Large Drawer Front/Back	1/2	3	20 1/2
2	R Drawer Bottoms	1/4	7 1/2	20
2	S Drawer Veneer	1/4	3	21

## Hardware

### Item

- 2 Hinges – Rockler Polished Brass Narrow Fixed Pin Hinge 2" L x 1-1/8" W
- 2 Pulls – Rockler 1-1/2" W Rectangular Recessed Ring Pull
- 4 Knobs – Cosmas 3312BB Brushed Brass Contemporary Finger Pull